

Flight Certificate

FreeStyle Libre glucose monitoring systems are classified as a medical device¹

The FreeStyle Libre glucose monitoring systems¹ continuously measure interstitial fluid glucose levels. It's designed for people with diabetes mellitus, including pregnant women. It is designed to replace blood glucose testing in the self-management of diabetes including dosing of insulin

Important: The sensor must be removed before undergoing Magnetic Resonance Imaging (MRI).

Note: Some airport full-body scanners include x-ray or millimetre radio-wave, which you cannot expose your sensor to. The effect of these scanners has not been evaluated and the exposure may damage the sensor or cause inaccurate results. To avoid removing your sensor, you may request another type of screening. If you do choose to go through a full-body scanner, you must remove your sensor.

The system consists of two main parts:

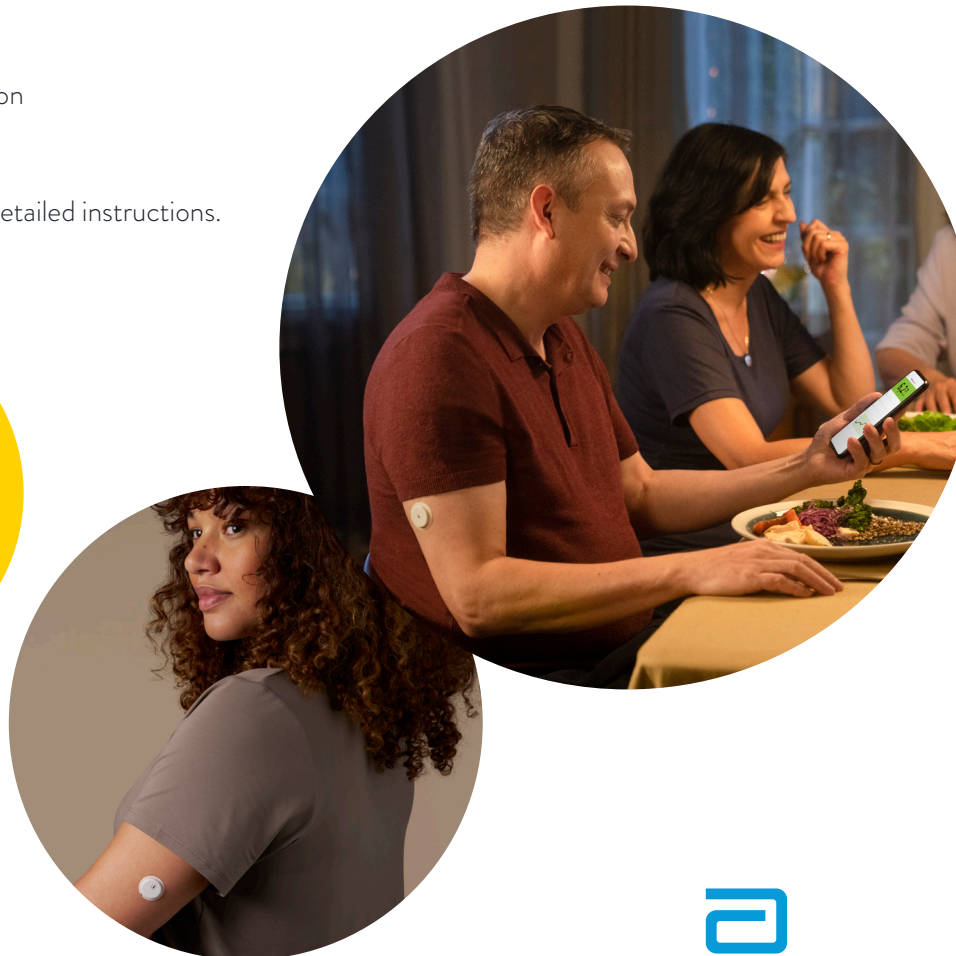
1. A handheld reader/smartphone application
2. A disposable sensor worn on your body

Remember to refer to the user manuals for detailed instructions.

Customer Service Numbers

Finland: 0800 555 500
Norway: 800 87 100
Sweden: 020-190 11 11

Open Mon-Fri:
08.00-16.00
Sweden: 08.00-18.00
(excluding Bank Holidays)



Abbott Diabetes Care Ltd.
Range Road
Witney, Oxon
OX29 0YL, UK

Images and simulated data are for illustrative purposes only. Not real patient or data.

1. FreeStyle Libre glucose monitoring systems refers to a FreeStyle Libre 2 or FreeStyle Libre 3 system

© 2024 Abbott. The sensor housing/casing, FreeStyle, Libre, and related brand marks are marks of Abbott. ADC - 95180 v1.0 07/24